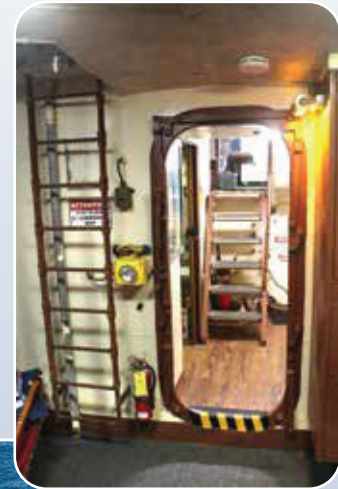


# M/V TOWLINE

Phone: 781-631-4800  
matt@smithmarineinc.com



Berthing for 5 scientific crew plus Captain and First Mate



300 square foot below deck storage



1800 gallon fuel capacity with a navigational range of 3200 NM at 7 knots

Multi-point moor capability for exact positioning of ground tackle



Workspace on Main Deck level



Engine Room:  
Main propulsion: (1) CAT D375 500 HP  
Electrical Power: (2) CAT C311 20 KW 120/240/450 VAC 60 Hz



Full Galley capability



FULLY INSURED  
USCG SAFETY STANDARDS  
LICENSED OPERATORS  
WBE/DBE CERTIFIED

[www.smithmarineinc.com](http://www.smithmarineinc.com)